



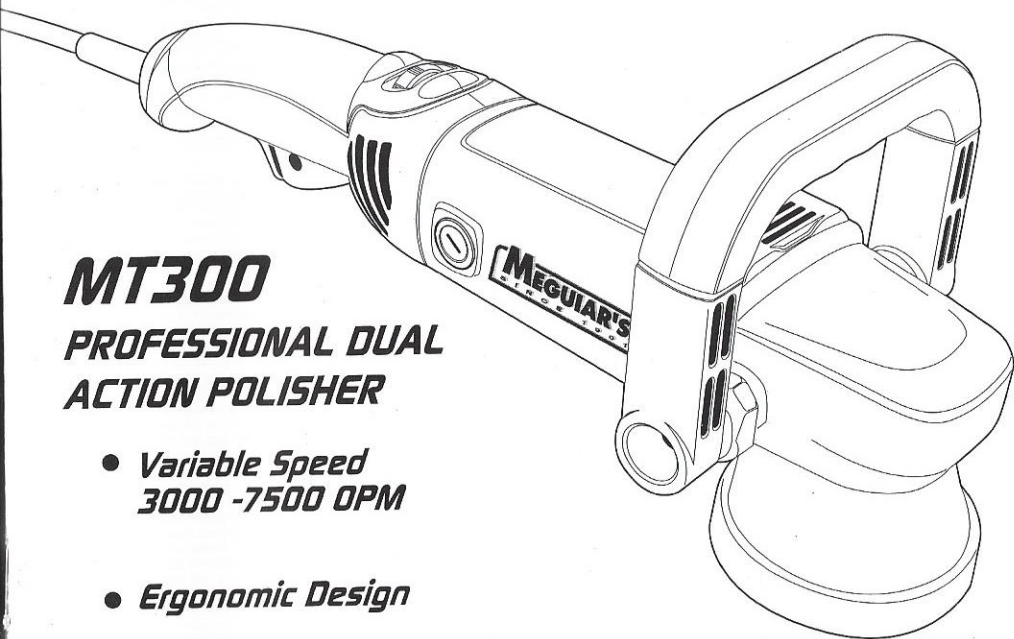
MT300

PROFESSIONAL
DUAL ACTION POLISHER

INSTRUCTION MANUAL

MT300 PROFESSIONAL DUAL ACTION POLISHER

- *Variable Speed
3000 -7500 OPM*
- *Ergonomic Design*



Model and Serial No.

The Model and Serial No. is located on the main housing of the tool. Record these numbers in the spaces below and attach original sales receipt for future reference.

Model No. _____

Serial No. _____

IMPORTANT

Please make certain that the person intended to use this equipment carefully reads and understands these instructions before starting operations.



MT300 PROFESSIONAL DUAL ACTION POLISHER INSTRUCTION MANUAL

5/16" Diameter Shaft

120V AC 60 Hz, 4.5 AMP

3000 - 7500 OPM

Important Safety Information

Please read, understand and follow all safety information contained in these instructions prior to the use of this tool. Retain these instructions for future reference.

Intended Use

This polisher is intended for use in industrial locations, and used only by skilled, trained professionals in accordance with the instructions in this manual. It is designed for use as a paint polisher for automotive, marine, RV & motorcycle detailing. It should only be used for such buffing applications and within marked capacity and ratings. Use in any other manner or with other accessories could lead to unsafe operating conditions.

Do not operate tool in an excessively damp or wet application.

Explanation of Signal Word Consequences

	WARNING: Indicates a potentially hazardous situation which, if not avoided, may result in death or serious injury and/or property damage.
	CAUTION: Indicates a potentially hazardous situation which, if not avoided, may result in minor or moderate injury and/or property damage.

Summary of Device and Carton Labels containing Safety Information

- Symbol indicates direction of tool rotation.
- For safe operation, see instructions manual.
- Wear eye protection
- Symbol indicates "Class II" construction
- Wear hearing protection
- Wear gloves
- Wear respiratory protection
- WARNING - Hazardous voltage**
- Recycle; Do not dispose of in household waste
- WARNING - Repetitive motion / extended exposure to vibration may harm hands / arms**

NOM Norma Oficial Mexicana Approved Mark (If Present on Product)



Intertek Testing Services, Inc. United States and Canada Listed Mark.

Read the Safety Data Sheets (SDS) before using any materials.

Contact the suppliers of the workpiece materials and abrasive materials for copies of the SDS if one is not readily available.

⚠ WARNING

Exposure to **DUST** generated from workpiece and/or abrasive materials can result in lung damage and/or other physical injury. Use dust capture or local exhaust as stated in the SDS. Wear government-approved respiratory protection and eye and skin protection. Failure to follow this warning can result in serious lung damage and/or physical injury.



⚠ GENERAL POWER TOOL SAFETY WARNINGS

⚠ WARNING: Read all safety warnings and instructions. Failure to follow the warnings and instructions may result in electric shock, fire, and/or other serious injury.

Save all warnings and instructions for future reference.

The term "power tool" in the warnings refers to your mains-operated (cords) power tool or battery-operated (cordless) power tool.

- 1. Work Area Safety**
 - a. **Keep work area clean and well lit.** Cluttered or dark areas invite accidents.
 - b. Do not operate power tools in explosive atmospheres, such as in the presence of flammable liquids, gases or dust. Power tools create sparks which may ignite the dust or fumes.
 - c. **Keep children and bystanders away** while operating a power tool. Distractions can cause you to lose control.
- 2. Electrical Safety**
 - a. **Power tools plugs must match the outlet. Never modify the plug in any way. Do not use any adapter plugs with earthed (grounded) power tools.** Unmodified plugs and matching outlets will reduce risk of electric shock.
 - b. **Avoid body contact with earthed or grounded surfaces such as pipes, radiators, ranges and refrigerators.** There is an increased risk of electric shock if your body is earthed or grounded.
 - c. **Do not expose power tools to rain or wet conditions.** Water entering a power tool will increase the risk of electric shock.
 - d. **Do not abuse the cord. Never use the cord for carrying, pulling or unplugging the power tool. Keep cord away from heat, oil, sharp edges or moving parts.** Damaged or entangled cords increase the risk of electric shock.
 - e. **When operating a power tool outdoors, use an extension cord suitable for outdoor use.** Use of a cord suitable for outdoor use reduces the risk of electric shock.
 - f. **If operating a power tool in a damp location is unavoidable, use a ground fault circuit interrupter (GFCI) protected supply.** Use of a GFCI reduces the risk of electric shock.
- 3. Personal Safety**
 - a. **Stay alert, watch what you are doing and use common sense when operating a power tool. Do not use a power tool while you are tired or under the influence of drugs, alcohol or medication.** A moment of inattention while operating power tools may result in serious personal injury.
 - b. **Use personal protective equipment. Always wear eye protection.** Protective equipment such as dust mask, non-skid safety shoes, hard hat, or hearing protection used for appropriate conditions can reduce personal injuries.
 - c. **Prevent unintentional starting. Ensure the switch is in the off-position before connecting to power source and/or battery pack, picking up or carrying the tool. Carrying power tools with your finger on the switch or energizing power tools that have the switch on invites accidents.**
 - d. **Remove any adjusting key or wrench before turning the power tool on.** A wrench or a key left attached to a rotating part of the power tool may result in personal injury.
 - e. **Do not overreach. Keep proper footing and balance at all times.** This enables better control of the power tool in unexpected situations.
 - f. **Dress properly. Do not wear loose clothing or jewelry. Keep your hair, clothing and gloves away from moving parts.** Loose clothes, jewellery or long hair can be caught in moving parts.
 - g. **If devices are provided for the connection of dust extraction and collection facilities, ensure these are connected and properly used.** Use of dust collection can reduce dust-related hazards.
- 4. Power Tool Use and Care**
 - a. **Do not force the power tool. Use the correct power tool for your application.** The correct power tool will do the job better and safer at the rate for which it was designed.
 - b. **Do not use the power tool if the switch does not turn it on and off.** Any power tool that cannot be controlled with the switch is dangerous and must be repaired.
 - c. **Disconnect the plug from the power source and/or the battery pack from the power tool before making any adjustments, changing accessories, or storing power tools.** Such preventive safety measures reduce the risk of starting the power tool accidentally.
 - d. **Maintain power tools. Check for misalignment or binding of moving parts, breakage of parts and any other condition that may affect the power tool's operation. If damaged, have the power tool repaired before use.** Many accidents are caused by poorly maintained power tools.
 - e. **Keep cutting tools sharp and clean. Properly maintained cutting tools with sharp cutting edges are less likely to bind and are easier to control.**
 - f. **Use the power tool, accessories and tool bits, etc. in accordance with these instructions, taking into account the working conditions and the work to be performed.** Use of the power tool for operations different from those intended could result in a hazardous situation.
- 5. Service**

Have your power tool serviced by a qualified repair person using only identical replacement parts. This will help to ensure that the safety of the power tool is maintained.

⚠ SAFETY WARNINGS FOR ALL OPERATIONS

⚠ WARNING: Read all safety warnings and instructions. Failure to follow the warnings and instructions may result in electric shock, fire, and/or other serious injury.

Save all warnings and instructions for future reference.

The term "power tool" in the warnings refers to your mains-operated (cords) power tool or battery-operated (cordless) power tool.

- a. **This power tool is intended to function as polisher. Read all safety warnings, instructions, illustrations and specifications provided with this power tool.** Failure to follow all instructions listed below may result in electric shock, fire and/or serious injury.
- b. **Operations such as grinding, sanding, wire brushing, or cutting-off are not recommended to be performed with this power tool.** Operations for which the power tool was not designed may create a hazard and cause personal injury.
- c. **Do not use accessories which are not specifically designed and recommended by the tool manufacturer.** Just because the accessory can be attached to your power tool, it does not assure safe operation.
- d. **The rated speed of the accessory must be at least equal to the maximum speed marked on the power tool.** Accessories running faster than their RATED SPEED can break and fly apart.
- e. **The outside diameter and the thickness of your accessory must be within the capacity rating of your power tool.** Incorrectly sized accessories cannot be adequately guarded or controlled.
- f. **The arbour size of backing pads or any other accessory must properly fit the spindle of the power tool.** Accessories with arbour holes that do not match the mounting hardware of the power tool will run out of balance, vibrate excessively and may cause loss of control.

- g. Do not use a damaged accessory. Before each use inspect the accessory such as backing pad for cracks, tear or excess. If power tool or accessory is dropped, inspect for damage or install an undamaged accessory. After inspecting and installing an accessory, position yourself and bystanders away from the plane of the rotating accessory and run the power tool at maximum no-load speed for one minute. Damaged accessories will normally break apart during this test time.
- h. Wear personal protective equipment. Depending on application, use face shield, safety goggles or safety glasses. As appropriate, wear dust mask, hearing protectors, gloves and workshop apron capable of stopping small abrasive or workpiece fragments. The eye protection must be capable of stopping flying debris generated by various operations. The dust mask or respirator must be capable of filtering particles generated by your operation. Prolonged exposure to high intensity noise may cause hearing loss.
- i. Keep bystanders a safe distance away from work area. Anyone entering the work area must wear personal protective equipment. Fragments of workpiece or of a broken accessory may fly away and cause injury beyond immediate area of operation.
- j. Hold power tool by insulated gripping surfaces only, when performing an operation where the cutting accessory may contact hidden wiring or its own cord. Cutting accessory contacting a "live" wire may make exposed metal parts of the power tool live and shock the operator.
- k. Position the cord clear of the spinning accessory. If you lose control, the cord may be cut or snagged and your hand or arm may be pulled into the spinning accessory.
- l. Never lay the power tool down until the accessory has come to a complete stop. The spinning accessory may grab the surface and pull the power tool out of your control.
- m. Do not run the power tool while carrying it at your side. Accidental contact with the spinning accessory could snag your clothing, pulling the accessory into your body.
- n. Regularly clean the power tool's air vents. The motor's fan will draw the dust inside the housing and excessive accumulation of powdered metal may cause electrical hazards.
- o. Do not operate the power tool near flammable materials. Sparks could ignite these materials.
- p. Do not use accessories that require liquid coolants. Using water or other liquid coolants may result in electrocution or shock.

▲ ADDITIONAL SAFETY WARNINGS

- a. Maintain a firm grip on the power tool and position your body and arm to allow you to resist kickback forces. Always use auxiliary handle, if provided, for maximum control over kickback or torque reaction during start-up. The operator can control torque reactions or kickback forces, if proper precautions are taken.
- b. Never place your hand near the rotating accessory. Accessory may kickback over your hand.
- c. Do not position your body in the area where power tool will move if kickback occurs. Kickback will propel the tool in direction opposite to the wheel's movement at the point of snagging.
- d. Use special care when working corners, sharp edges etc. Avoid bouncing and snagging the accessory. Corners, sharp edges or bouncing have a tendency to snag the rotating accessory and cause loss of control or kickback.
- e. Do not attach a saw chain woodcarving blade or toothed saw blade. Such blades create frequent kickback and loss of control.

▲ ADDITIONAL SAFETY WARNINGS FOR POLISHING OPERATIONS

Do not allow any loose portion of any polishing pads or any attachment strings to spin freely. Tuck away or trim any loose attachment strings. Loose and spinning attachment strings can entangle your fingers or snag on the workpiece.

Tool Current	Extension Cord Length ft (m)			
	25 (7.6)	50 (15.2)	75 (22.8)	100 (30.4)
4.5 A	16 AWG	14 AWG	12 AWG	10 AWG

▲ CAUTION

To reduce the risk associated with environmental contamination:

- Do not throw electric power tools into the household waste! In accordance with the European Directive 2002/96/EG on Waste Electrical and Electronic Equipment and transposition into national law, used electric power tools must be collected separately and recycled in an environmentally friendly manner.
- Separate collection of used products and packaging allows materials to be recycled. Use of recycled materials helps prevent environmental pollution and reduces the demand for raw materials.
- Dispose of all the process dust in accordance with all applicable regulations.

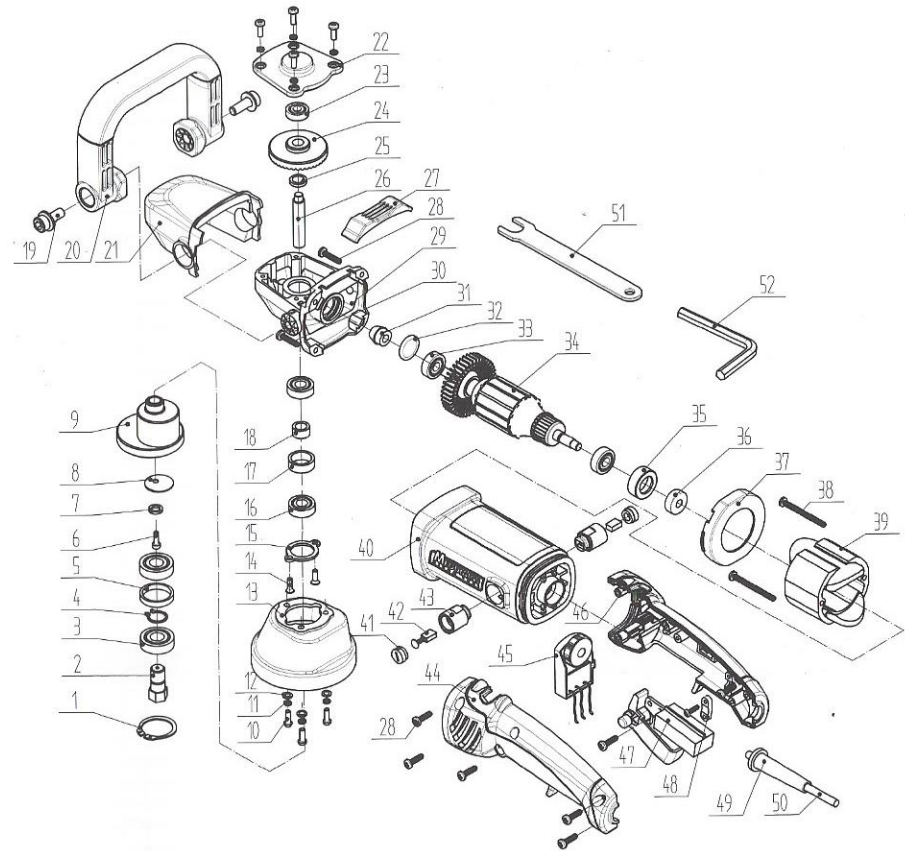
To reduce the risks associated with skin abrasion:

- Do not touch the rotating parts of the tool during use for any reason without taking appropriate protective measures.

To reduce the risk associated with serious damage to the power tool:

- Do not operate this tool on a current where the voltage is not within correct limits. Do not operate tools rated A.C. on D.C. current.

Parts Reference



Parts Page

Parts No.	PCPNo	Parts List	Amount
1	20M115-0-11	Retainer Ring 28	1
2	6P150-0-20	Output Shaft	1
3	GB279-89	Bearing 6001	2
4	GB 894.1-86	Bearing Retainer 12	1
5	6P150-0-21	Bearing bushing	1
6	GB818-85	Cross Recessed Pan Head Screw M5*16	1
7	GB 93-87	Spring Washer 5	1
8	6P150-0-13	Washer	1
9	6P150-0-3	Balance Block	1
10	GB818-85	Cross Recessed Pan Head Screw M4*12	7
11	GB 93-87	Spring Washer 4	7
12	GB/T 96-85	Flat Washer 4	3
13	6P150-0-18	Plactic Guarder	1
14	GB819-85	Cross Recessed Countersunk Head Screw M4*10	2
15	4M100B-0-3	Bearing Clamp	1
16	GB279-89	Bearing R6ZZ	2
17	6P150-0-10	Outer Bearing Bushing	1
18	6P150-0-9	Inner Bearing Bushing	1
19	GB70-85	Hex Bolt with Flat Washer M8*20	2
20	6P150-0-1P	D-handle	1
21	6P150-0-2	Gear Box cover	1
22	6P150-0-14	Gear Box cap	1
23	GB279-89	Bearing 607	1
24	6P150-0-6	Gear	1
25	6P150-0-7	Gear Washer	1
26	6P150-0-11	Drive Shaft	1
27	6P150-0-17	Rubber Bumper	1
28	GB845-85	Cross Recessed Pan Head Tapping Screw ST4*16	10
29	6P150-0-1	Gear Box	1
30	GB845-85	Cross Recessed Pan Head Tapping Screw ST4*25	2
31	6P150-0-8	Pinion	1
32	GB3452.1-92	O-ring	1
33	GB279-89	Bearing 608	2
34	6P150-3P	Rotor	1
35	D(3)6-0-15	Rubber Bearing Bushing	1
36		Magnetic Ring	1
37	6P150-0-5	Wind Baffle	1
38	GB845-85	Cross Recessed Pan Head Tapping Screw ST4*50	2
39	6P150-1-1P	Stator	1
40	6P150-1-1	Housing	1
41	ZU03M100A-1-6	Carbon Brush Cover	2
42	ZU03M100A-1-2	Brush	2
43	ZU03M100A-1-4	Brush Holder	2
44	6P150-0-15	Left Handle	1
45	6P150-0-19	Speed Dial	1
46	6P150-0-16	Right Handle	1
47		Trigger 8621	1
48	4R8-2-3	Cable Clamp	1
49	3R8-4-9(120V)	Cable Jacket	1
50	4P180	Cable	1
51	6P150-0-12	Wrench	1
52		Hex Wrench 6	1

Product Specifications: Electric Variable Speed Polisher 7 in. (178 mm)

Model	Speed	Spindle Size	Voltage	Frequency	Current	Weight	Length
	/min.	UNC	VAC	Hz	AMP	lb. (kg)	in (mm)
MT300	OPM 3000-7500	5/16"-24 Diameter Shaft	120	60	4.5	5.5	17 (432)

Operating Instructions

STARTING AND STOPPING POLISHER

1. **CAUTION:** Make certain the Trigger Switch is in the "OFF" position, and the power source is the same as specified on the tool's nameplate. Connect the tool to the power source.
2. Pull the **Trigger Switch (A) Fig. 1** to start the motor. Release the Trigger switch button to stop motor.
3. The **Trigger Lock (B) Fig. 1** holds the Trigger Switch in the ON position when it is depressed while the Trigger Switch is pulled.
4. To release the Trigger Lock, pull the Trigger Switch to its limit to make the Trigger Lock disengage.

(C) Thumbwheel (B) Trigger Lock

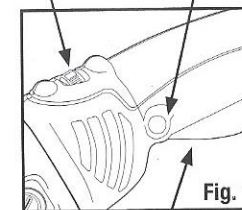


Fig. 1

(A) Trigger Switch

VARIABLE SPEED SOFT START CONTROL

1. Adjust the speed by turning the **Thumbwheel (C), Fig. 1**.
2. Thumbwheel settings are listed in OPM speeds.
3. You can change the speed while motor is running or while it is stopped.

CHANGING THE BACKING PLATE

1. **WARNING:** DISCONNECT POLISHER FROM POWER SOURCE.
2. Position **spindle wrench (A) Fig. 2**, (furnished with polisher) to engage the flats on the **spindle (B) Fig. 2**.

Notes: It may be necessary to rotate the **backing plate (C) Fig. 2** (by hand) to expose the spindle flats.

3. While holding the spindle with the wrench, rotate the backing plate counterclockwise (by hand) to remove.
4. To install backing plate, reverse the above procedure.

(C) Backing Plate (B) Spindle (A) Spindle Wrench

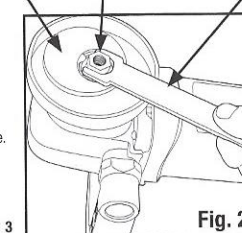


Fig. 2

HANDLE

A handle is furnished with the polisher. To change handle position, loosen the two **screws (A) Fig. 3** using the supplied wrench. Adjust the handle to desired position. Tighten the two screws using the wrench.

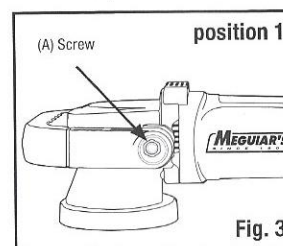
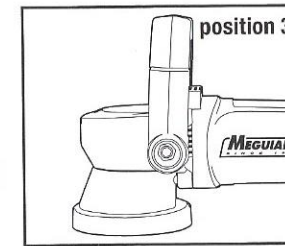
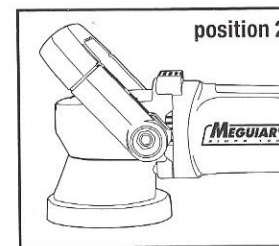


Fig. 3



Maintenance

CLEANING

1. Periodically blow out all air passages with dry compressed air. All plastic parts should be cleaned with a soft damp cloth. NEVER use solvents to clean plastic parts.
2. Wear safety glasses while using compressed air.

FAILURE TO START

1. Should your tool fail to start, check to make sure the prongs on the cord plug are making good contact in the outlet. Also, check for blown fuses or open circuit breakers in the line.
2. If tool still fails to start, replace the two carbon brushes. Please read the entire Brush Replacement section before performing this procedure.
3. If polisher persists in not starting, have it inspected by trained repair personnel.

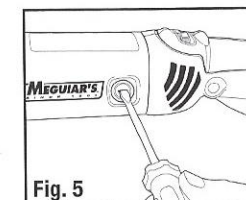


Fig. 5

BRUSH REPLACEMENT

1. Remove side-port cap with **medium flat head screw driver (Fig. 5)**. Turn counter-clock-wise.
2. Gently pull out **brush (Fig. 6)**.
3. Replace with new brush by inserting brush end first, coil end out.
4. Return side-port cap to the side port opening. Turn clock-wise with medium flat head screw driver.

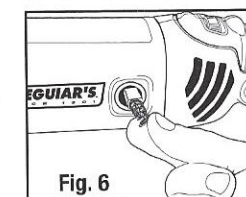


Fig. 6

Product Use: Many factors beyond Meguiar's control and uniquely within user's knowledge and control can affect the use and performance of a Meguiar's product in a particular application. Given the variety of factors that can affect the use and performance of a Meguiar's product, user is solely responsible for evaluating the Meguiar's product and determining whether it is fit for a particular purpose and suitable for user's method of application.

Warranty, Limited Remedy, and Disclaimer: Meguiar's warrants this tool against defects in workmanship and materials under normal operating conditions for one (1) year from the date of purchase. Meguiar's MAKES NO OTHER WARRANTIES OR CONDITIONS, EXPRESS OR IMPLIED, INCLUDING, BUT NOT LIMITED TO, ANY IMPLIED WARRANTY OR CONDITION OF MERCHANTABILITY OR FITNESS FOR A PARTICULAR PURPOSE OR ANY IMPLIED WARRANTY OR CONDITION ARISING OUT OF A COURSE OF DEALING, CUSTOM OR USAGE OF TRADE. User is responsible for determining whether the Meguiar's tool is fit for a particular purpose and suitable for user's application. User must operate the tool in accordance with all applicable operating instructions, safety precautions, and other procedures stated in the instruction manual in order to be entitled to warranty coverage. Meguiar's shall have no obligation to repair or replace any tool or part that fails due to normal wear, inadequate or improper maintenance, inadequate cleaning, nonlubrication, improper operating environment, improper utilities, operator error or misuse, alteration or modification, mishandling, lack of reasonable care, or due to any accidental cause. If a tool or any part thereof is defective within this warranty period, then the sole and exclusive remedy is, at Meguiar's option, repair or replacement of the Meguiar's product or refund of the purchase price.

Limitation of Liability: Except where prohibited by law, Meguiar's and seller will not be liable for any loss or damage arising from the Meguiar's product, whether direct, indirect, special, incidental or consequential, regardless of the legal theory asserted, including warranty, contract, negligence or strict liability.

Submitting a Warranty Claim: Meguiar's distributors are neither required or approved to make repairs or replace tool on Meguiar's behalf. Please contact Meguiar's directly with any issues; we can be reached by phone at 800-347-5700 or online at "www.meguiars.com/en/contact-us". Please note that all warranty claims are subject to manufacturer's approval. Be sure to keep your sales receipt in a safe place. This must be submitted when filing a warranty claim, within 1 year from the date of purchase. For additional assistance call Meguiar's Customer Care Center at 1-800-347-5700

Product Repair after Warranty Has Expired: Meguiar's distributors are neither required or approved to make repairs or replace tool under warranty on Meguiar's behalf. Warranty shall be void if tool should be delivered disassembled or tampered. Please contact Meguiar's directly with any issues; we can be reached by phone at 800-347-5700 or online at "www.meguiars.com/en/contact-us".



Meguiar's, Inc
17991 Mitchell South Irvine, CA 92614
meguiars.com